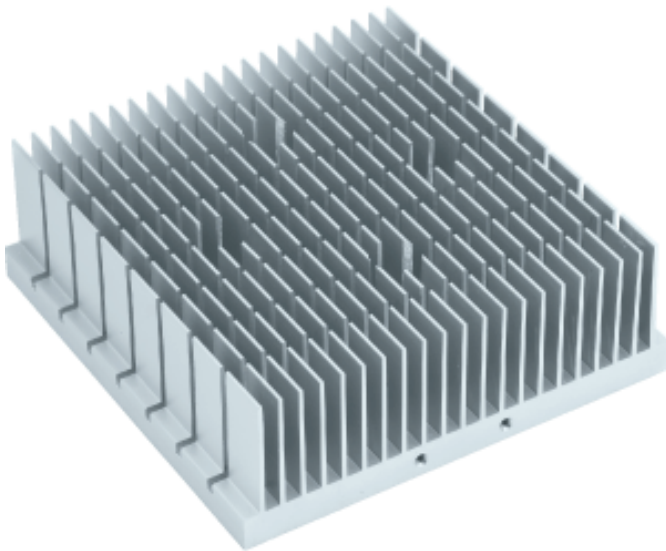


KH120C(Rev.E)

EXTRUDED HEATSINK



Model No

KH120C(Rev.E)

Dimension(mm)

120x120x41.15mm (WxLxH)

Base Thickness(mm)

9.9

Material

AL6063-T5

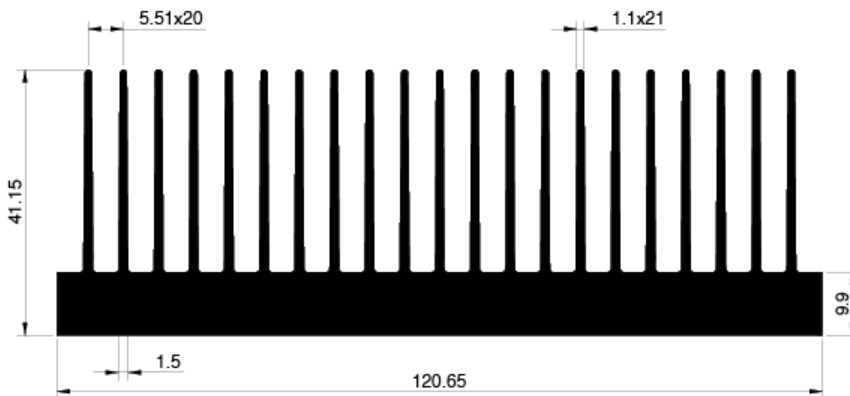
Finish

Clean anodized

Note

RoHS compliance, CNC milling, Drilling

OUTLINE



HEATSINK POWER DISSIPATION

