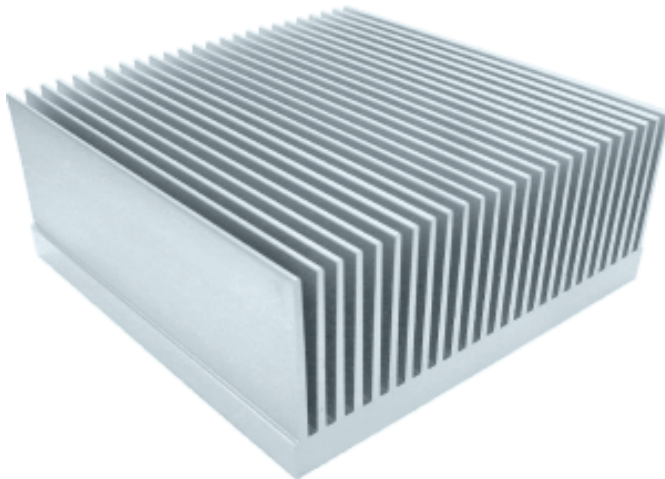


40EX100L100C

EXTRUDED HEATSINK



Model No

40EX100L100C

Dimension(mm)

100x100x40mm (WxLxH)

Base Thickness(mm)

8.8

Thermal Resistance(°C/W)

2.025 °C / W

Material

AL6063-T5

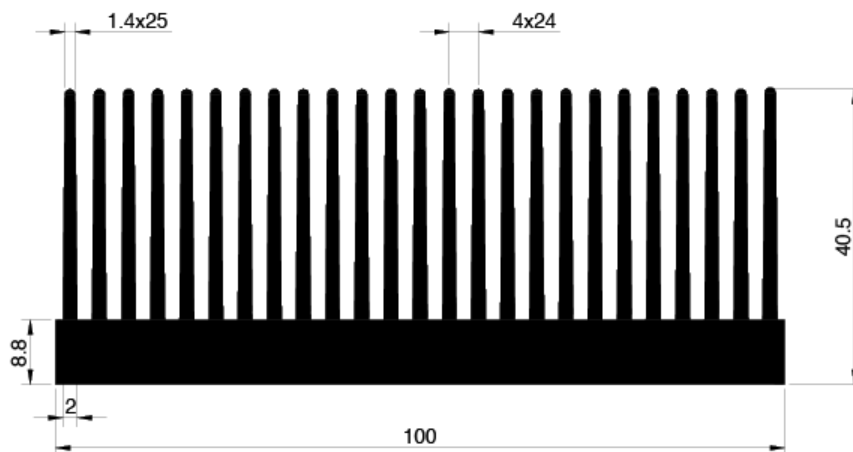
Finish

Clean anodized

Note

RoHS compliance, CNC milling

OUTLINE



HEATSINK POWER DISSIPATION

