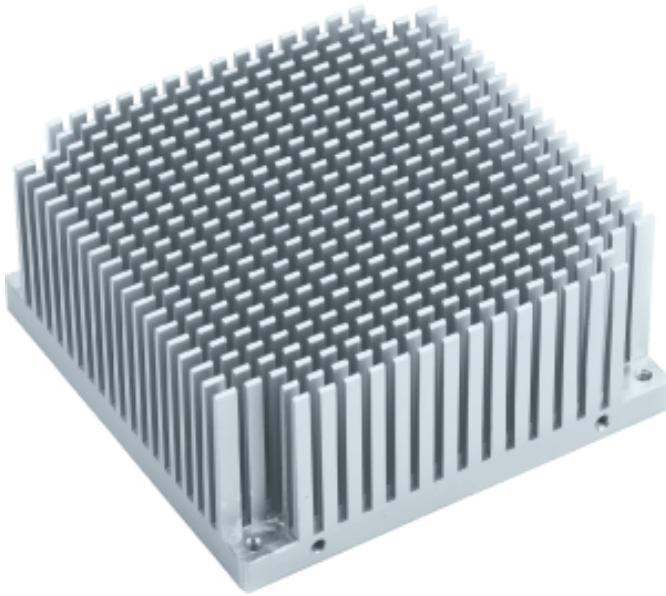


# 40EC90L90C

## EXTRUDED HEATSINK



Model No

40EC90L90C

Dimension(mm)

90x90x40mm (WxLxH)

Base Thickness(mm)

7.4

Thermal Resistance(°C/W)

2.135 °C / W

Material

AL6063-T5

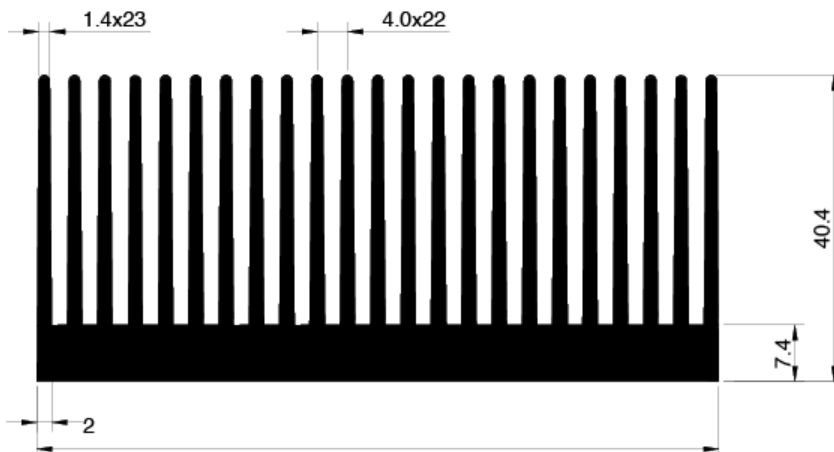
Finish

Clean anodized

Note

RoHS compliance, CNC milling

## OUTLINE



## HEATSINK POWER DISSIPATION

