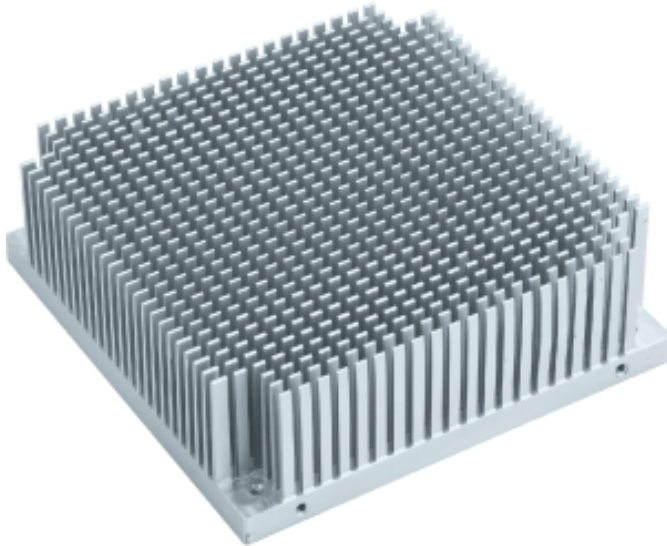


# 40EC120L120C

## EXTRUDED HEATSINK



Model No

40EC120L120C

Dimension(mm)

120x120x40mm (WxLxH)

Base Thickness(mm)

8.8

Thermal Resistance(°C/W)

1.685 °C / W

Material

AL6063-T5

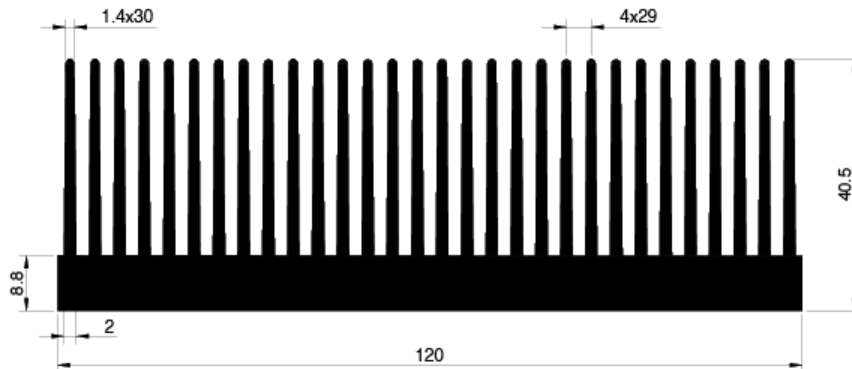
Finish

Clean anodized

Note

RoHS compliance, CNC milling

## OUTLINE



## HEATSINK POWER DISSIPATION

